



One Family, Inc.

Presented to Greater Brockton Health Alliance
September 9, 2022

CERTIFICATE of COMPLETION
Betsy Vega

CERTIFICATE of COMPLETION
Ruth Padilla

CERTIFICATE of COMPLETION
Mymy Kalemba

CERTIFICATE of COMPLETION
Soumia Menzeh

CERTIFICATE of COMPLETION
Roxanna de la Rosa

OBTUSE between 90° and 180°
STRAIGHT exactly 180°
SUPPLEMENTARY combine to make 180°
ANGLES
Angles with the same vertex and a common side are adjacent.
Vertical angles are opposite angles formed by two intersecting lines.
Corresponding Angles 1 and 5
Alternate Angles 4 and 6
Alternate exterior Angles 1 and 8

RHOMBUS
Opposite sides are equal

RECTANGLE
Opposite sides are parallel
SQUARE
Opposite sides are equal

AREA OF A TRIANGLE

16

HYPOTHESIS
Predict the answer
EXPERIMENT
Design a test to confirm or disprove your hypothesis
Record what happens

One Family, Inc.

Preventing family homelessness through advocacy, education, and innovation.

Public Policy



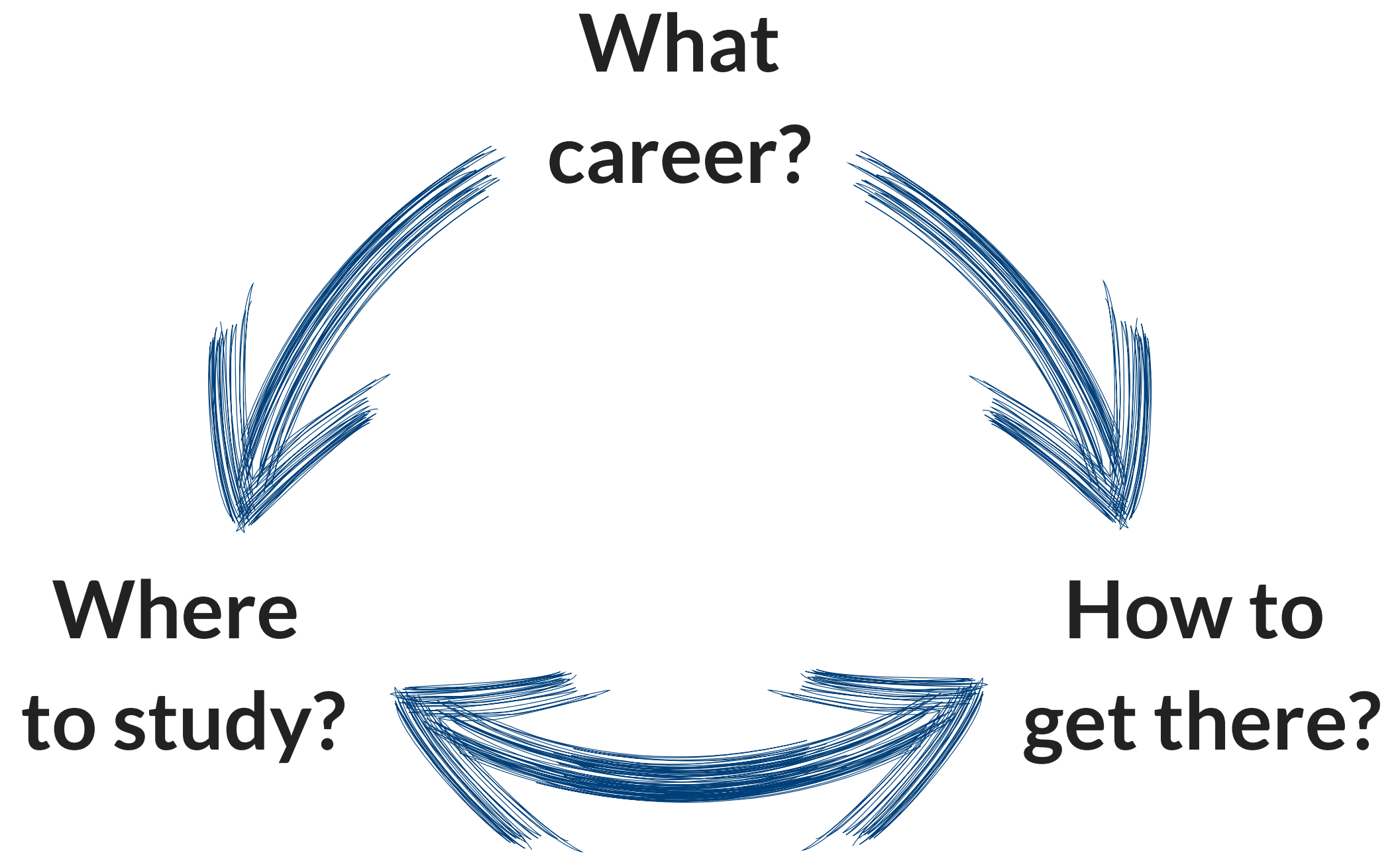
Direct Service



Technical Assistance



C2C Answers the Questions



How C2C Works



- What careers are in demand & what they pay
- What credentials are required for these careers
- Where to obtain & how to finance these credentials
- Specific steps to enter the chosen career

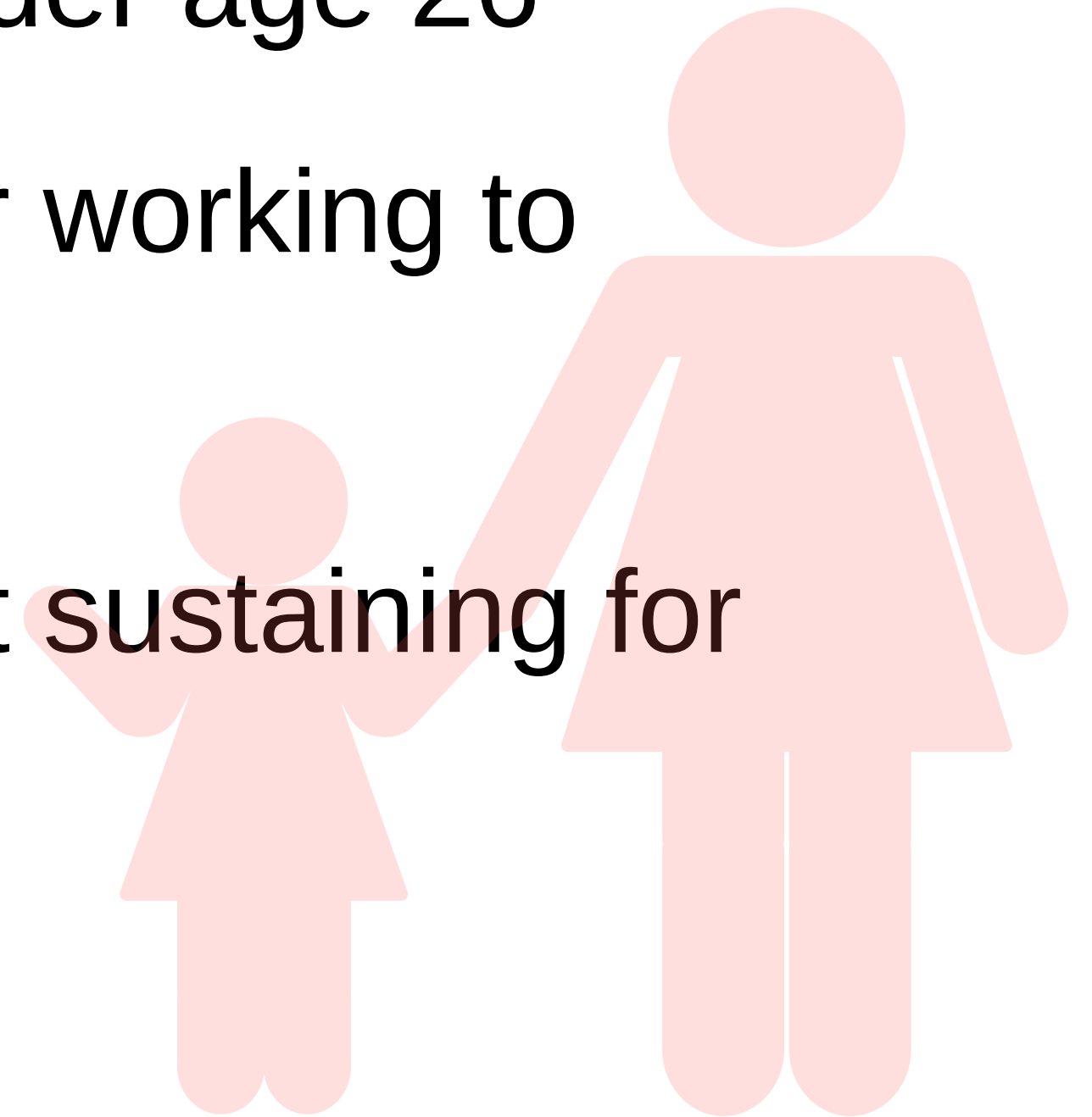


Goals of Credential to Career (C2C) in Brockton

- Serve 120 Brockton-area participants over two years
- Focus on racial equity by creating opportunities for low-wage earners within Signature Healthcare Brockton Hospital (SHC), who are disproportionately BIPOC, to find pathways for educational and economic advancement
- Work with external community partners to serve participants and (where appropriate) connect them with jobs at SHC

Who is Eligible for C2C

- Adults with dependents under age 26
- Legal work authorization or working to obtain it
- Income that is currently not sustaining for self and family



Progress To Date

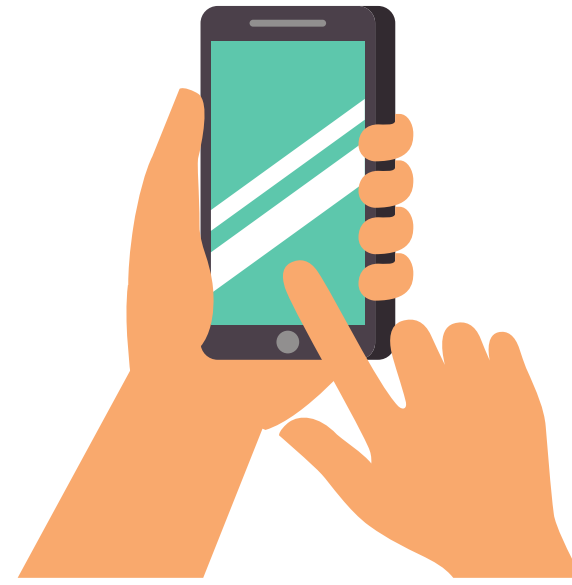
Enrolled 54 participants total, out of our goal of 120 by June 2023.

Actively recruiting with a rolling entry!

Program completers have achieved the following successes:

- Beginning HiSET/GED classes;
- Starting a new role at Signature Healthcare and researching Bachelor's programs;
- Starting new roles at two local nonprofits;
- Completing the FAFSA and enrolling in certification and Associate's degree programs;
- Working with the MA Attorney General's office to receive student loan forgiveness for fraudulent loans; and
- Training to become a Home Health Aide and starting a new CNA job.





How to Learn More and Enroll Participants

We are currently enrolling participants and have a rolling entry. Anyone interested in participating can start any time!

Participants receive one-on-one coaching, up to \$500 stipend, and help with technology, if needed!

Reach out to our coaches:

Emily MacMillan: emacmillan@onefamilyinc.org / 617-302-6663

Bithja Meus: bmeus@onefamilyinc.org / 617-302-6799

Fill out our application (<https://forms.gle/2dKHbBo5wtVsSLFR6>)



“

You taught me things I never knew about. From the types of careers, to figuring out which college to choose ... I had the foundation in me, but you gave me the steps to climb.

”

- Lizette,
C2C Participant





Any Questions?

Matthew Miller, Deputy Director, mmiller@onefamilyinc.org

www.onefamilyinc.org